

Under the web-address <https://www.process-informatik.de> are product specific documentations or software-driver/-tools available to download.
If you have questions or suggestions about the product, please don't hesitate to contact us.

Process-Informatik Entwicklungsgesellschaft mbH
Im Gewerbegebiet 1
DE-73116 Wäschenbeuren
+49 (0) 7172-92666-0
info@process-informatik.de
<https://www.process-informatik.de>

Menutree Website:

- + Products / docu / downloads
- + Accessories
 - + Connector plug / equipment
 - + MPI-netadapter with power-adapter



QR-Code Website:



Please make sure to update your drivers before using our products.

Remote-maintenance Siemens-S5-PLC



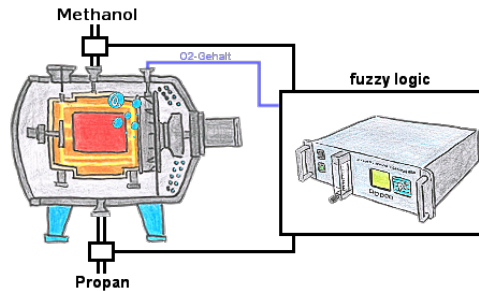
Remote-maintenance of a Siemens-S5-controller with S5-LAN++ on PD-port via secure VPN-tunnel of the TeleRouter

Remote maintenance with TS-software without original TS-adapter



You have to reach urgent your PLC via remote maintenance and have no TS-adapter in your company? No problem, configure with the MPI-Kabelmanager your S7-interface-cable MPI/PPI-Kabel the mode "TS" for "remote maintenance", connect this cable with the TS-Adapter (article number 9350-TS) with a standard modem and send it all to your client. Now you will be able to start the connection with your TS-software and solve the problem. And this all without buying a original TS-adapter.

Fuzzy controller with the OSC-II



Through 3 free configurable limits (of each kind) you wont be able to realice a fuzzy-controller of your heat treatment furnace.

S7-PLC over USB

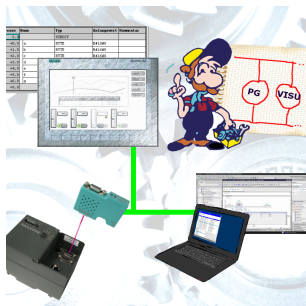


Communication with S7-PLC via USB, just how and with what?

Data-communication with S7-PLC from PC or other devices via USB, which interface is required. Questions you don't have to worry about. With "S7 over USB" you get the right interface-products for PPI, MPI and Profibus.

Which one you use then is up to you.

Connect MPI / Profibus with current network panels



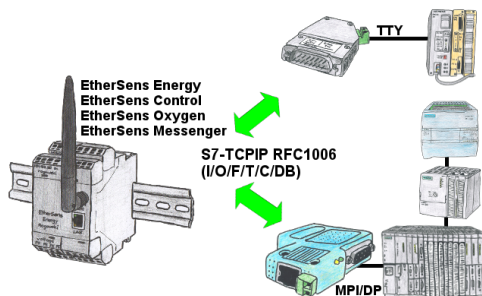
Visualize with the latest S7 network panels directly on your MPI Profibus.

No PLC change necessary.

Connect several nodes at the same time via a network module.

Simultaneous access from different systems possible.

PLC coupling S5 and S7



Data-processing/-recording of PLC-data?

Data-logging of recorded process-values in a DB writing or read out in the connected PLC via network, thanks to RFC1006-communication in the devices is nothing in the way.

Even accesses to flags (individual bits of the words) are possible at any time. Configure the data via the integrated web-server that gets target-PLC or returns the necessary-data.

If the PLC does not have an Ethernet-port, with optional adapters, enable this communication:

* S5 over S5-LAN++

* S7-PPI/MPI/Profibus over S7-LAN