

Under the web-address <https://www.process-informatik.de> are product specific documentations or software-driver/-tools available to download.  
If you have questions or suggestions about the product, please don't hesitate to contact us.

Process-Informatik Entwicklungsgesellschaft mbH  
Im Gewerbegebiet 1  
DE-73116 Wäschenbeuren  
+49 (0) 7172-92666-0  
[info@process-informatik.de](mailto:info@process-informatik.de)  
<https://www.process-informatik.de>

**Menutree Website:**

- + Products / docu / downloads
- + Accessories
  - + Connection cable / adapter
  - + USB
    - + USB 2.0 connection cable type A/A

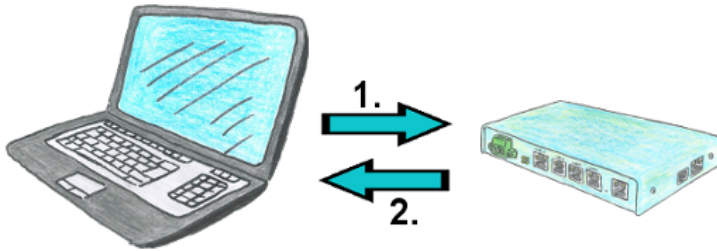


**QR-Code Website:**



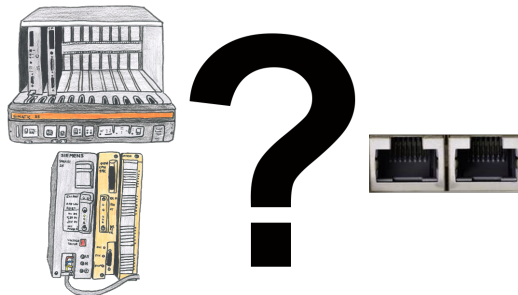
Please make sure to update your drivers before using our products.

## Saving of phone cost through call-back



You need a communication over the phone with your operation of facilities, but do not want to pay the phone bills? No problem, with the TELE-router you are able to work even with recall. This means that you first call the device and tell him that you want a call back. If the credentials are correct and the recall is permitted, the TELE-router connection is terminated and then it calls back the transferred number. Your customer shall bear the cost of the connection.

## Turbo-LAN-interface for the S5

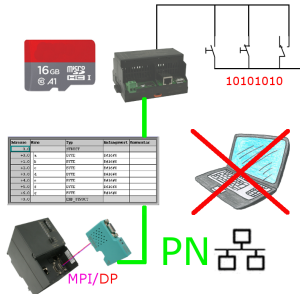


S5-115U/135U/150U/155U and need further processing of data via network and PG interface too slow?

Plug the "S5-TCPIP 100" interface-card into a free slot in the rack, integrate the card into the S5 and nothing stands in the way of communication. Access the controller-data "parallel" to the PG-interface with "Power", regardless of whether it is "TCP/IP" or "ISO on TCP (RFC1006)", "ISO (H1)", "Modbus on TCP" or "SPS header", the interface-card reacts to the various protocols according to your configuration and returns the required data.

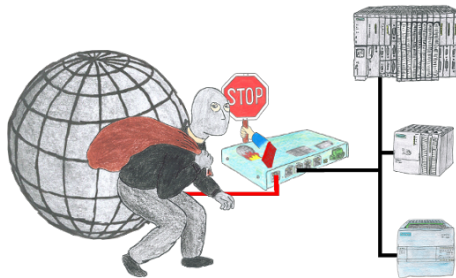
With the integrated 4-way-switch, several LAN-participants can be connected to the card and thus to the controller.

## Data backup S7-PLC over MPI/Profibus on SD-card via dig. IO



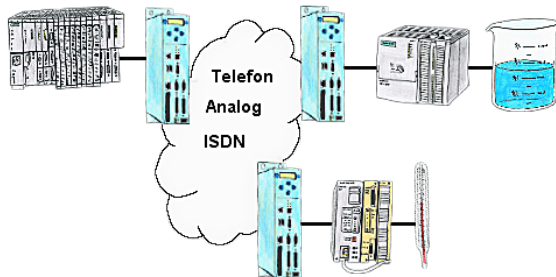
Via digital input triggered DB-backup/-restore without additional PC via MPI/Profibus to SD-card

## Protection for data-dump and modification



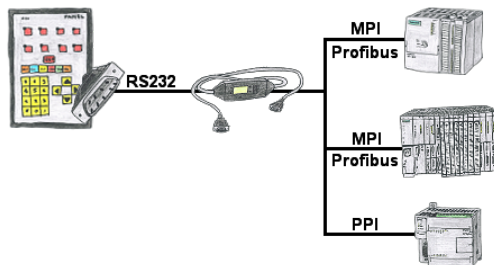
You want to protect your system against unauthorized access and changes? No problem, with the S7-firewall you secure your system against unauthorized access and thus prevent deduction or alteration of your system and process data.

## PLC coupling (data exchange between PLCs)



Your pumping stations report the water levels of the central control via telephone network. The central office itself can of course transmit commands/messages to the substations as well. Thereto no dedicated line is required, a "normal" telephone connection is sufficient because the devices cut the line after occurred message.

## Visualisation of your S7-PLC via COM-Port



Your panel provides a serial port and no MPI/Profibus for connecting a S7-PLC. Connect the MPI-II-cable with it and you're Online with your panel.