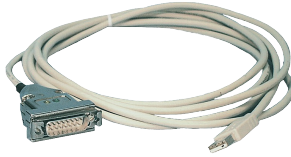


# Handling-Short Instruction for PG-USB Cable 9359-1 V1.5



The PG-USB-Kabel is an interface cable for the 15pin PG-Port X4/X5 of a S5 plc. The cable should be connected to the USB-Port (type A-connector). This cable will be active against the plc while the power will be taken from the usb-port of the PC. For some special slot cards for the S5 you can get some special adapters with the several pinning of this card.

This cable can be prolonged with the classic prolongation (pin 2+9 and 6+7 itself drilled) up to 100m 1to1 pin.

In the Case of the Cable are 2 LED's embedded

GREEN lights when data is transferred to the PLC  
YELLOW lights when data is transferred from PLC to PC

## Install the cable

First connect the PG-USB cable into a free USB-Port of your computer. Please download from the below listed web-side the USB-driver for the PG-USB-cable.

Extract the file on your PC and guide the starting hardware-installation-wizard to this folder. The software will install the drivers for the PG-USB cable automatically.

After the driver is installed successfully the COM port is displayed in Control Panel → System → Device manager → COM and LPT → Properties (Right mouse click) → Extended.

**If you changed the COM-Port-Number, restart the PC to activate this COM-Port. After restart choose in the application the selected COM-Port in the configuration.**

## Using the original Siemens S5 software in a DOS window

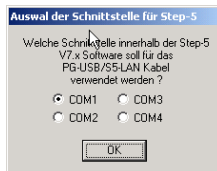
Do you use the original Siemens S5 patch once. You can download this named web-side and install it on that PC. Go on with choosing the language. with „OK“. Press „Install“ and choose installed. The installation routine is now have to select the used COM port. Then „End“ as soon as the installation is



software, then you need to run the S5-"Step5 additional driver" also from the

Select the PG-USB cable and confirm the folder where the S5 software is searching for the S5 software. Next you the S5 patch will be installed. Press completed.

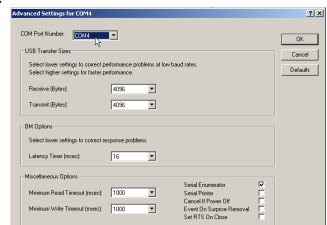
**Attention:** For the Step5-Original COM4 selected. If necessary change the select "System". In the Tab "Hardware", Device-Manager the virtual COM-Port is and LPT", Right click „USB Serial Port "Properties". In the following dialog the button „Advanced“, in the next dialog you could choose the COM-Port.



application there **must** be one COM1 to COM port. Go to the Control Center, click button „Device manager“. In the listed in the section "Interfaces (COM (COMx)", in the Context Menu choose select the tab „Port Settings“. Click onto

## Using S5 Original-Software under Windows 98

A virtual created COM port cannot be used directly from a MSDOS Box (Windows 98). The solution is easy just install the "S5 VCOM for Win98". In the PG-USB menu expand the tree and select the entry "S5 VCOM for Win98". Choose the language and enter the path where the software should be installed. Select the name for the start menu and click next to proceed with the installation. After the End of the Installation the PC must be rebooted. S5 VCOM is installed into the Autostart-Directory



and is started every time the PC boots. If an error occurs while installation or starting of driver, a message is shown. If correctly installed, on the bottom-right corner of the Screen a new tray icon is displayed. The software should be installed. Select the name for the start menu and click next to proceed with the installation. After the End of the Installation the PC must be rebooted. S5 VCOM is installed into the Autostart-Directory and is started every time the PC boots. If an error occurs while installation or starting of driver, a message is shown. If correctly installed, on the bottom-right corner of the Screen a new tray icon is displayed.

This Tray-Icon shows, if a PG-USB-Cable is communication is in progress. (S=from PC to S5, E=from S5 zu PC) If you double-click displayed:



connected or not, and if a S5, E=from S5 zu PC) on the Tray-Icon a new Dialog is

In the section State is for communication



displayed which Interface-Cable is used and if a connection exists.

In the section virtual on the left side is the Windows-Software Ports) of the MS-selected in the S5-Software. According which COM - Ports already exists, the next free COM-Port will be used:

Port the following information is shown COM - Port which is used from and on the right side the COM-Port (I/O-DOS Box. This COM-Port should be

existing COM

- NONE
- COM1
- COM1,COM2
- COM1,COM3
- COM1,COM2,COM3

from S5VCOM used

- COM1 [03F8h,IRQ4]
- COM2 [02F8h,IRQ3]
- COM3 [03E8h,IRQ4]
- COM2 [02F8h,IRQ3]
- COM4 [02E8h,IRQ3]

In the section Program you could exit the application, change the language of the application or minimize to the tray-icon.

**PG 95 / PG 2000**

Select under Options → Interface the corresponding virtual COM-Port.

**S5 for Windows**

In Files → Properties → Interface select the Protocol „S5“ and the virtual COM-Port

**Accessories**

- AG-150-Adapter for PG-USB-Kabel
- CP525K-Adapter for PG-USB-Kabel
- Sinum-Adapter for PG-USB-Kabel
- S5-LAN Module (Programming the S5 over Network)

- CP525-Adapter for PG-USB-Kabel
- WF470-Adapter for PG-USB-Kabel
- PG-USB Lengthen set

# Further interface-cable for S5

## PG-UNI-Kabel

- Couples the PC (9pol. COM-interface) with the 15 pole X4/X5 interface port of the plc
- Galvanically separably to 1kV with PG ISO adapter
- Prolongable up to 300 meters
- Complete electronics in the plug housing
- Supply from the PLC over the current sources of the PG-port
- Functioned also at some CP's, IP's and Sinumerik controls



## PG-UNI-II Kabel

- ESD firm transducer component up to 15kV
- 9pin and 15pin plug housings are made of solid metal
- For controll of data transmission, there are two LED's integrated (Rx/D and Tx/D).
- Couples the PC (9pol. COM-interface) with the 15 pole X4/X5 interface port of the plc
- Galvanically separably to 1kV with PG ISO adapter
- Prolongable up to 300 meters
- Complete electronics in the plug housing
- Supply from the PLC over the current sources
- Functioned also at some CP's, IP's and Sinumerik controls



## PG-COM-Kabel

- Couples the PC (9pol. COM-interface) with the 15 pole X4/X5 interface port of the plc
- Complete electronics in the plug housing
- Supply from the PLC over the 5V of the PG-port



## PG-ISO-SET

- Galvanically separable from pc to the plc up to 1kV
- contact-protected housing, it is plastic housing
- The set contains PG-UNI-Kabel (3m) Art.Nr.9359-3 and the PG-ISO-Adapter Art.Nr.9359-8
- Supply of the module from the plc Voltage 5V and/or 24V

## SC-09-Kabel

- Couples the PC (9pol. COM-interface) with the RS485 interface port of the plc
- PLC coupling with 25pin D-Sub or with Mini-Din-plug (special adapter)
- Supply from the PLC over the 5V of the PG-port
- Complete electronics in the plug housing



## PG-ISO-Adapter for PG-UNI/PG-UNI-II

- Galvanically separable from pc above the PG-UNI-Kabel to the plc up to 1kV
- contact-protected housing, it is plastic housing
- Generates a new Ground and new Current Sources for the communication
- Supply of the module from the plc Voltage 5V and/or 24V



## S5-LAN+-Modul

- 3 minutes and PG interface of the S5-PLC-control is network-compatible
- AS511 via virtual COM port
- S7-TCPIP RFC1006 compatible (S7 panel to S5 PLC)
- Supply of the module from the PLC voltage 24V
- Active module, integrated power sources for TTY communication



## S5-BRIDGE (LAN and WIFI communication parallel)

- 10 minutes and PG interface of the S5 PLC control is network-compatible (cable and/or WIFI)
- AS511 via virtual COM port (cable and/or WIFI)
- S7-TCPIP RFC1006 compatible (S7 panel on S5 PLC, cable and/or WIFI)
- Supply of the module from the PLC voltage 24V
- Active module, integrated power sources for TTY communication



## Netz-Adapter for PG-UNI/PG-UNI-II

- Generates new Current Sources for the communication
- Operation area: damaged Current Sources, not existing Current Sources, sanded Current Sources, passive Current Sources
- Supply of the module with 24V external



## Additional adapters for PG-UNI/PG-UNI-II

general : Small Adapter, only 10cm long  
Plug mechanics fitting to the plc



## CP525-Adapter

- Connection to the **programming port** of the CP525

## CP525-K-Adapter

- Connection to the **communication port** of the CP525
- This adapter can be used for following devices, too: CP524 and SAS523/525

## AG150-Adapter

- **Only** use with the Netzadapter, because plc AG150 has an passive interface port!

## WF470-Adapter

- **Only** used with the Netzadapter, because WF470 has an passive interface port!

## SINUM-Adapter

- This adapter can be used for following plc-type: 805, 810, 820, 840, 850, 880

## Additional adapters for PG-USB

general : Small Adapter, only 10cm long  
Plug mechanics fitting to the plc



## CP525-Adapter

- Connection to the **programming port** of the CP525

## CP525-K-Adapter

- Connection to the **communication port** of the CP525
- This adapter can be used for following devices, too: CP524 and SAS523/525

## AG150-Adapter

## WF470-Adapter

## SINUM-Adapter

- This adapter can be used for following plc-type: 805, 810, 820, 840, 850, 880

Under the web-address <https://www.process-informatik.de> are product specific documentations or software-driver/-tools available to download.  
If you have questions or suggestions about the product, please don't hesitate to contact us.

Process-Informatik Entwicklungsgesellschaft mbH

Im Gewerbegebiet 1

DE-73116 Wäschenbeuren

+49 (0) 7172-92666-0

[info@process-informatik.de](mailto:info@process-informatik.de)

<https://www.process-informatik.de>

Copyright by PI 2004 - 2024

**Menutree Website:**

- + Products / docu / downloads
- + Hardware
  - + Programming devices
  - + S5
    - + S5 over USB
    - + PG-USB

**QR-Code Website:**



Please make sure to update your drivers before using our products.

## Remote-maintenance Siemens-S7-PLC with MPI/Profibus with firewall



Remote-maintenance of a Siemens-S7-controller with S7-LAN on MPI/Profibus via secure VPN-tunnel and scalable firewall

## Sensor-networking 4.0

**Siemens S5**  
Read / Write  
No. Schmelze

**Siemens S7**  
Read / Write  
PPS / MW / DP

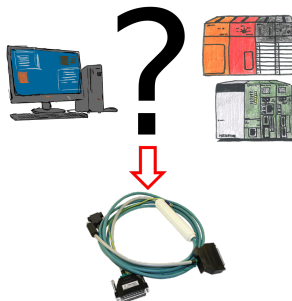
**Energieanalyse**  
(EN 60721-1 bis 60721-3)  
"EtherSens Energy"  
L1, L2, L3, W-Echtzeitanalyse  
bis 8000 Messungen / Sek  
Spannungen bis 500 VAC  
Strome über 1000 A  
Hz / cos phi / Leistungsfaktor  
W / Blind / Scheinleistung MW  
Energieverbrauch kWh

**Alle Messgrößen**  
U / I / C / Q / H / HD, m, kg, mm ...  
diagnostische Analyse, Überwachen, Alarmieren  
zentral protokollieren + beobachten

Vorhandene Sensoren direkt einbinden  
analoge und digitale Ein-Klippage  
aktiviert und Maske frei konfigurieren  
Messgrößen einfach über WEB eingeben  
Klick-Montage auf Standard-Hutschine  
Stromversorgung 230VAC / 24VDC

Integrierter Webserver  
Zugriff auf alle Sensoren im Netz  
Protokoll auf SD Karte + FTP-Server  
in verschiedenen Datenformate  
bei Green: E-Mail + Ausgabe über Netz

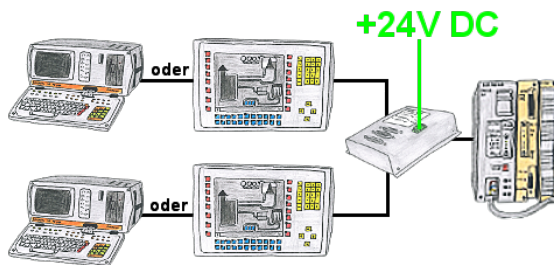
## Interface for Mitsubishi Melsec Fx- & A-series



Changes to Mitsubishi PLCs but no interface cable?

Use the SC09 cable to connect the PC to the Mitsubishi MELSEC FX & A series. Any PLC with an RS-422 interface can be connected. Including adapter cable for 8-pin DIN connection, firmly attached so that it can never be forgotten. One cable for both types, universal to the Mitsubishi PLC.

## PD-interface of the S5-PLC already occupied



Your PD-interface of the S5-PLC is already occupied with a panel and you should accomplish program modifications without removing the panel? No problem, connect the Multiplexer one-time to the PLC and then connect the panel and also your PC to the Multiplexer. Now you can work parallel with the PLC without the need of affecting the operation of the panel. You can even work with 2 programming devices simultaneously, 2x open the same block, only changes which are stored at last will be finally stored in the PLC. Also ideal for trainings purposes if PLC's with IO's are scare goods.

The 24V-version is ideal for control-cabinet-installation due to the smaller footprint. A universal multiplexer no matter what you connect at the two PG-sockets, both participants communicate parallel with the control.

## Management of the IP address

**-IP-Zugriffsschutz**

Schutzmodus:

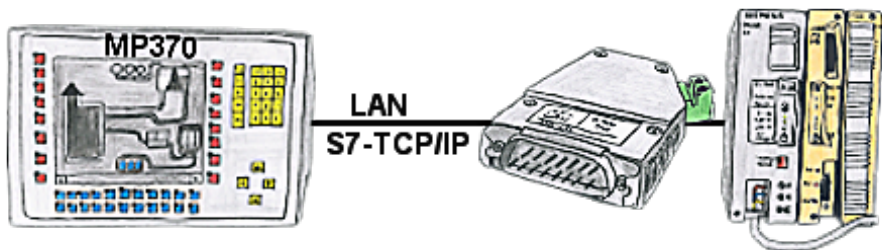
IP-Adresse / IP-Bereich #1:	192.168.178.10	- Bereich (optional)
IP-Adresse / IP-Bereich #2:	192.168.178.100	- 192.168.178.200
IP-Adresse / IP-Bereich #3:	192.168.178.254	- Bereich (optional)
IP-Adresse / IP-Bereich #4:		- Bereich (optional)
IP-Adresse / IP-Bereich #5:		- Bereich (optional)
IP-Adresse / IP-Bereich #6:		- Bereich (optional)
IP-Adresse / IP-Bereich #7:		- Bereich (optional)
IP-Adresse / IP-Bereich #8:		- Bereich (optional)
IP-Adresse / IP-Bereich #9:		- Bereich (optional)
IP-Adresse / IP-Bereich #10:		- Bereich (optional)
IP-Adresse / IP-Bereich #11:		- Bereich (optional)
IP-Adresse / IP-Bereich #12:		- Bereich (optional)
IP-Adresse / IP-Bereich #13:		- Bereich (optional)
IP-Adresse / IP-Bereich #14:		- Bereich (optional)
IP-Adresse / IP-Bereich #15:		- Bereich (optional)

IPs aus Liste verbieten

The IP filter is used to determine whether or not the entered IP-addresses or IP-address-ranges may communicate with the connected controllers via the module.

The list can be edited centrally be switched with a button from "allowed" on "not allowed".

## Watching of S5- PLC's with panel for S7-PLC



Your panel only has a LAN-socket as PLC-interface and supports only S7-RFC1006, no problem. Connect this socket with the S5-LAN++ and plug it directly on the PD-interface of the PLC. The S5-LAN++ performs adverse your panel as a S7-PLC although you receive the data from the S5-PLC. Then access to the variables and data of the S5-PLC is already available.