

Under the web-address <https://www.process-informatik.de> are product specific documentations or software-driver/-tools available to download.

If you have questions or suggestions about the product, please don't hesitate to contact us.

Process-Informatik Entwicklungsgesellschaft mbH

Im Gewerbegebiet 1

DE-73116 Wäschenbeuren

+49 (0) 7172-92666-0

[info@process-informatik.de](mailto:info@process-informatik.de)

<https://www.process-informatik.de>

**Menutree Website:**

- + Products / docu / downloads
- + Accessories
  - + Connector plug / equipment
  - + Universal DIN-rail mounting

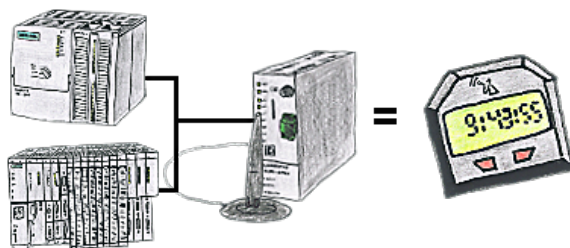


**QR-Code Website:**



Please make sure to update your drivers before using our products.

## Atomic time (GPRS) for the PLC



You need an exact time for your S7-plc? No problem, the TeleService-GSM fetches the current time via GPRS from a time-server and advises it to the S7-plc. How often and whenever the time shall be updated can be parameterised in the device.

## Remote maintenance with TS-software without original TS-adapter



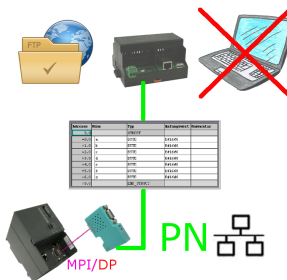
You have to reach urgent your PLC via remote maintenance and have no TS-adapter in your company? No problem, configure with the MPI-Kabelmanager your S7-interface-cable MPI-II-Kabel the mode "TS" for "remote maintenance", connect this cable with the TS-Adapter (article number 9350-TS) with a standard modem and send it all to your client. Now you will be able to start the connection with your TS-software and solve the problem. And this all without buying a original TS-adapter.

## Remote-maintenance Beckhoff-PLC



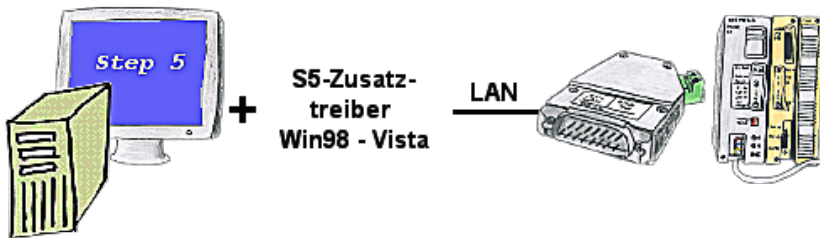
Remote-maintenance of a Beckhoff-controller with network-connection via secure VPN-tunnel of the TeleRouter

## Data backup S7-PLC over MPI/Profibus on FTP-server



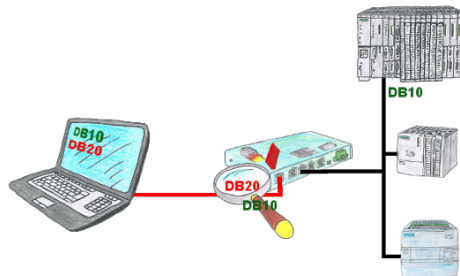
S7-PLC triggered DB-backup/-restore without additional PC via MPI/Profibus on FTP-server

## Communication with Win98 – XP/Vista/7/8/10/11 via network to S5-PLC



You still have a PC with Win98 and a MS-DOS-based Step5-package and would like to go Online on your S5-PLC via LAN? No problem, the provided virtual Com-Port PLCVCom emulates a COM-port on your PC with which you go Online. Even your MS-DOS-based Step5-software on this WIN98-PC can use this virtual Com-Port. With a patchtool for the Siemens Step5-software, which is provided as well, nothing else stands in your way to communicate via LAN.

## Protection of data areas in the PLC



You have in your facility machinery with complex program structures and want to prevent that the users do not change comprehensible content? No problem, with the S7-firewall you can assign specific data fields to each user or even generally protect certain data areas in the PLC.