

## Handling-Shortinstruction for S5-LAN++ V1.3

### Hardware

The S5-LAN++-module will be plugged direct on the S5-PG-port and will use the +24V of the PLC. If the PLC don't have +24V (for e.g. S5-90/95/100U) the device will be usable with external +24V with the green connector.

The both square LED's in the Ethernet-Connector shows the user the link-state of the network.

Green LED: 100 Mbit/s

Amber-coloured LED: 10 Mbit/s

LED off: no network connected.

LED on: network connected.

LED flashing: communication above the network

The round green LED shows the state of the S5-communication.

LED off: Device is off or booting.

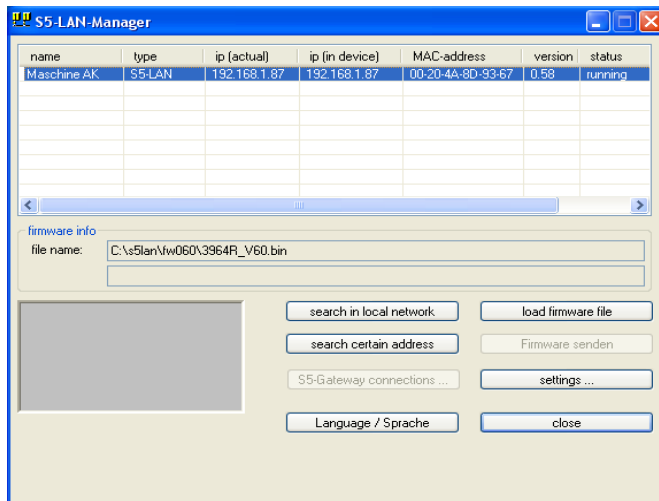
LED on: PLC is ONLINE

LED is flashing slowly and no network is connected → PLC will be searched.

LED and network LED are flashing → there is a communication to the PLC.

### S5-LAN-Manager

After pressing the button „search in local network“ the user can see in the table all found S5-LAN-modules.

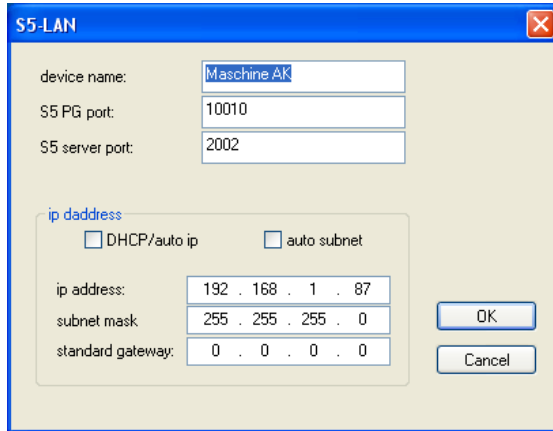


### Hint:

When there is no module found, please deactivate the „windows firewall“ on your PC and repeat the search. The modules have by factory-setting DHCP and when there is no DHCP-server in the network, the modules gives them itself an ip-address from the 169.xxx.xxx.xxx-range. These ip-address-range is often blocked by the „windows firewall“.

## Configuration of the device

Select an entry of the table and press the button „settings“. Then you got following dialog:



Configure the necessary data:

### **device name**

The device name is an arbitrary name, so you can identify the module correct.

### **S5 PG port**

TCP/IP-port where the programming communication will be handled. In the normal case, you don't have to change them.

### **S5 server port**

TCP/IP-port where the S5-LAN-LINK-protocol resp. the VIPA-protocol will be handled.

### **DHCP/auto ip**

If this item is selected, the device is looking while booting for a DHCP-server. If there is no response within 3 times of searching this server (is taking some seconds) so the module uses an ip-address from the "auto-ip-address-range".

### **auto subnet**

If this item is selected, the device compute the subnet mask automatically. For example for an ip-address of 192.168.0.80 the subnet will be used like 255.255.255.0. In the configuration field subnet mask there is no entry necessary.

### **ip address**

If "DHCP/auto ip" is switched off, the ip-address of the device can be configured here.

### **Subnet mask**

Here is defined the subnet mask of this device. When you configure the mask like 0.0.0.0 so the device will use an auto-subnet mask.

### **standard gateway**

If the device has to use a router, so the ip address of this router has be configured here.

After pressing the "OK"-button, the data will be stored in the S5-LAN++-module and the module is restarting up.

### **Reset**

If the user has configured a wrong ip address and is not able to reconfig the module with the S5-LAN-manager, so the module can be set to the factory default. For this, you have to press with a straighten paper clip through the whole on the switch for 2 seconds. After this 2 seconds the LED begins for a fast flashing. Now you can brake pressing the switch. The module makes a restart and

will start up with the configuration “DHCP/auto id” and “auto subnet”. After lighting of the round green LED the modul is ready for working.

### **Driver PLC-VCom**

For the communication with a Step5-programming software a virtual com-port is needed. This com-port is called PLCVCom. You have to install it on your PC. When you communicate with this virtual com-port, the selected product will be driven.

**The virtual com-port is only then visible, configurable and usable, when the state of the PLCVCom is “connected”. This means, a usable product is responsive.**

#### **technical data:**

dimension: 42 x 15 x 65 mm  
ext. Power supply: 24V DC, 80mA max.  
connector: 10/100 MBit (autosensing)  
scope of delivery: S5-LAN++-module  
virtual com-port for windows

**Attention:** For the S5-plc 6ES5102-8MA02 version 3 will be the PG-ISO- or Netz-Adapter required.

More to the virtual com-port-driver and the S5-LAN++-module as well as the current equipment manual can you download under

Under the web-address <https://www.process-informatik.de> are product specific documentations or software-driver/-tools available to download.

If you have questions or suggestions about the product, please don't hesitate to contact us.

Process-Informatik Entwicklungsgesellschaft mbH

Im Gewerbegebiet 1

DE-73116 Wäschenbeuren

+49 (0) 7172-92666-0

[info@process-informatik.de](mailto:info@process-informatik.de)

<https://www.process-informatik.de>

Copyright by PI 2004 - 2024

## Menutree Website:

- + Products / docu / downloads
- + Kleverles projects
- + K-9359-LAN

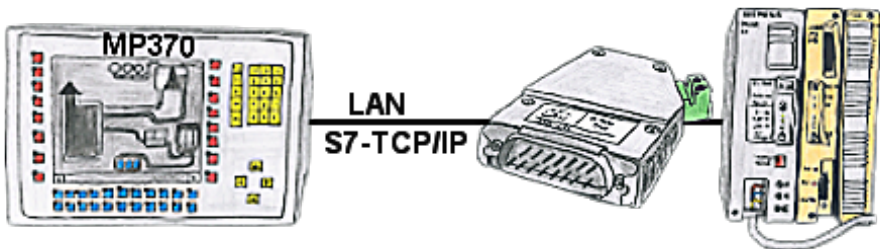


## QR-Code Website:



Please make sure to update your drivers before using our products.

### Watching of S5- PLC's with panel for S7-PLC



Your panel only has a LAN-socket as PLC-interface and supports only S7-RFC1006, no problem. Connect this socket with the S5-LAN++ and plug it directly on the PD-interface of the PLC. The S5-LAN++ performs adverse your panel as a S7-PLC although you receive the data from the S5-PLC. Then access to the variables and data of the S5-PLC is already available.