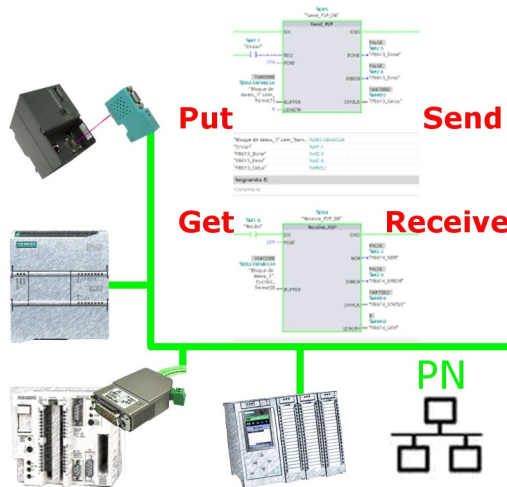


Handling short instructions for PLC coupling



Commissioning of S5-LAN++ and S7-LAN

Before you can start with the configuration of the coupling you should first set up your S5-LAN++ (to access your S5 controller via the PG interface) and / or S7-LAN (to access your S7 controller via PPI/MPI/Profibus) modules. For this please read the short instructions for the S5-LAN++ or S7-LAN.

Configure coupling

The S5-LAN++ and S7-LAN are supporting multiple couplings. In general a distinction is made between a active controller, which establishes and manages the connection, and a passive controller, which waits for the connection and queries.

For the coupling type “PUT/GET” a change is only needed on the active controller, because here flags and data blocks from the passive controller are directly accessed by the active controller.

For the coupling type “SEND/RCV” a change on both controllers is needed.

The following table shows a overview about possible couplings between controllers and shows up, where you can find more information about the configuration of the coupling. All descriptions and example applications can be downloaded on the product page of the S5-LAN++ and S7-LAN.

controller 1 (active)	controller 2 (passive)	coupling type	description / example
S7-200 via PPI	<i>any</i>	PUT/GET	project „S7-LAN_PUT-GET“
	S7-200 via PPI	SEND/RCV	project „S7-LAN_SEND-RCV“
S7-300/400 via MPI/DP	<i>any</i>	PUT/GET	project „S7-LAN Aktives PUT-GET“
	S7-300/400 via MPI/DP	SEND/RCV	project „S7-LAN an S7-LAN“
	S5 via PG port	SEND/RCV	project „S5-LAN++ an S7-LAN“

controller 1 (active)	controller 2 (passive)	coupling type	description / example
S7-300/400 via Ethernet-CP	S7-200/300/400 via PPI/MPI/DP	PUT/GET	S7-LAN manual section „Access via PUT/GET“
	S7-300/400 via MPI/DP	SEND/RECV	project „S7-LAN an S7-CP“
	S5 via PG port	PUT/GET	S5-LAN short instruction „S5-S7-coupling“
	S5 via PG port	SEND/RECV	Project „S5-LAN++ an S7-CP“
S7-1200/1500 via Ethernet	S7-200/300/400 via PPI/MPI/DP	PUT/GET	S7-LAN manual section „Access via PUT/GET“
	S5 via PG port	PUT/GET	S5-LAN short instruction „S5-S7-coupling“
S5 via PG port	S5 via PG port	SEND/RECV	project „S5-LAN++ an S5-LAN++“

For every example project shown in the table above there is also a description of the project. For S5 couplings this can be found within the ZIP archive with the example projects and for S7 couplings within the manual of the S7-LAN module.

Under the web-address <https://www.process-informatik.de> are product specific documentations or software-driver/-tools available to download.
If you have questions or suggestions about the product, please don't hesitate to contact us.

Process-Informatik Entwicklungsgesellschaft mbH

Im Gewerbegebiet 1

DE-73116 Wäschenbeuren

+49 (0) 7172-92666-0

info@process-informatik.de

<https://www.process-informatik.de>

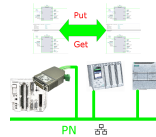
Copyright by PI 2019 - 2024

Menutree Website:

+ Products / docu / downloads

+ PLC-coupling S7-PN-CP to S5-PG-port

QR-Code Website:



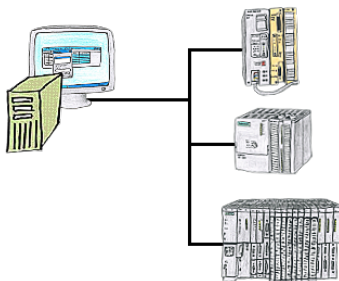
Please make sure to update your drivers before using our products.

Easy Web-Visualization



You need a web-visualization which is kept simple, with no additional Plugins like ActiveX, Flash(R) or Java(R) and is compatible with most general browser? Then you have found with S7-Visu the solution. Visualizations under Windows(R)/Linux on PC-based systems are just realizable as those for tablets or Phones with browser support. The simultaneous operation of multiple browsers at the same time is possible.

Project/history-administration of PLC-programming



Who doesn't know this? When accessing the PLC you find out that parts of the program flow has been changed and none of the colleagues/employees are responsible for it? Therefore install the "option controller" for the PG-2000-software, and every activity of the employees working with the program will be recorded. So you can identify the one employee very quickly and changes are ex post comprehensible, too.