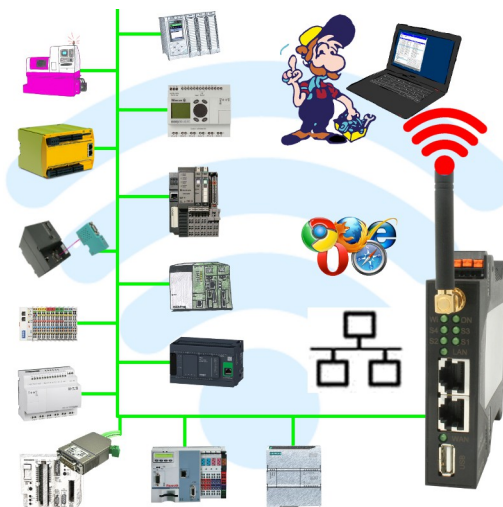


Handling short instructions for Wireless around the controller



Commissioning of ALF-UA

ALF-UA creates a WIFI network with the SSID "ALF-UA" and automatically assigns an IP-address via DHCP for the WIFI-participants who connect to the device.

Connect laptop/notebook to this WIFI-network, the respective PC is assigned an IP-address from the subnet 192.168.2.xxx.

If you need a different subnet for the connected controller, you can change the subnet after connecting the PC and ALF-UA:

- Connect PC to ALF-UA via WIFI
- Open the ALF-UA-website with a browser and IP address 192.168.2.1
- User name: admin
 Password: admin
- Menu „network“ => „AP router“ => „LAN“ => „router IP“ enter the desired subnet
 The changes are accepted by clicking on the diskette symbol
- After a restart, the device is available with the new parameters
- Rebuild the WIFI-connection of PC and ALF-UA

Connect the respective control/machine to the LAN port of the ALF-UA with a patch cable. Now that the PC and ALF-UA have been connected, the machine can be reached "wirelessly" and you can communicate.

Under the web-address <https://www.process-informatik.de> are product specific documentations or software-driver/-tools available to download.
If you have questions or suggestions about the product, please don't hesitate to contact us.

Process-Informatik Entwicklungsgesellschaft mbH

Im Gewerbegebiet 1

DE-73116 Wäschenbeuren

+49 (0) 7172-92666-0

info@process-informatik.de

<https://www.process-informatik.de>

Copyright by PI 2019 - 2024

Menutree Website:

+ Products / docu / downloads

+ Wireless around the Beckhoff-PLC

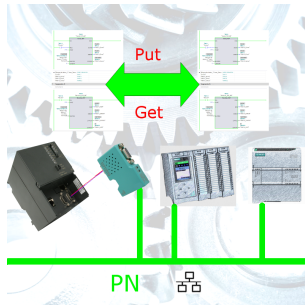


QR-Code Website:



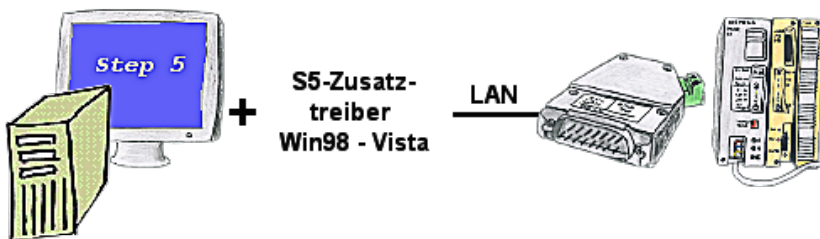
Please make sure to update your drivers before using our products.

S7-1200/1500 to S7-300/400 (MPI/DP)



Coupling S7-controller with PN-port at S7-controller with MPI/Profibus via network

Communication with Win98 – XP/Vista/7/8/10/11 via network to S5-PLC



You still have a PC with Win98 and a MS-DOS-based Step5-package and would like to go Online on your S5-PLC via LAN? No problem, the provided virtual Com-Port PLCVCom emulates a COM-port on your PC with which you go Online. Even your MS-DOS-based Step5-software on this WIN98-PC can use this virtual Com-Port. With a patchtool for the Siemens Step5-software, which is provided as well, nothing else stands in your way to communicate via LAN.

S5-PLC over LAN



Communication with S5-PLC via Ethernet, just how and with what?

Data-communication with S5-PLC from PC or other devices via network, which interface is required. Questions you don't have to worry about. With "S5 over LAN" you get the right interface-products for your interface of the PLC.

Which one you use then is up to you.

Remote-maintenance Pilz-PLC with firewall



Remote-maintenance of a Pilz-controller with network-connection via secure VPN-tunnel and scalable firewall